

Customer :

customer

Customer part :

customer part

Comment :

Comment

S1=6.77

S2=96.33

Tmax=425

Tp S2=464.0

PI=0.07

HI=573

Sample =755.75

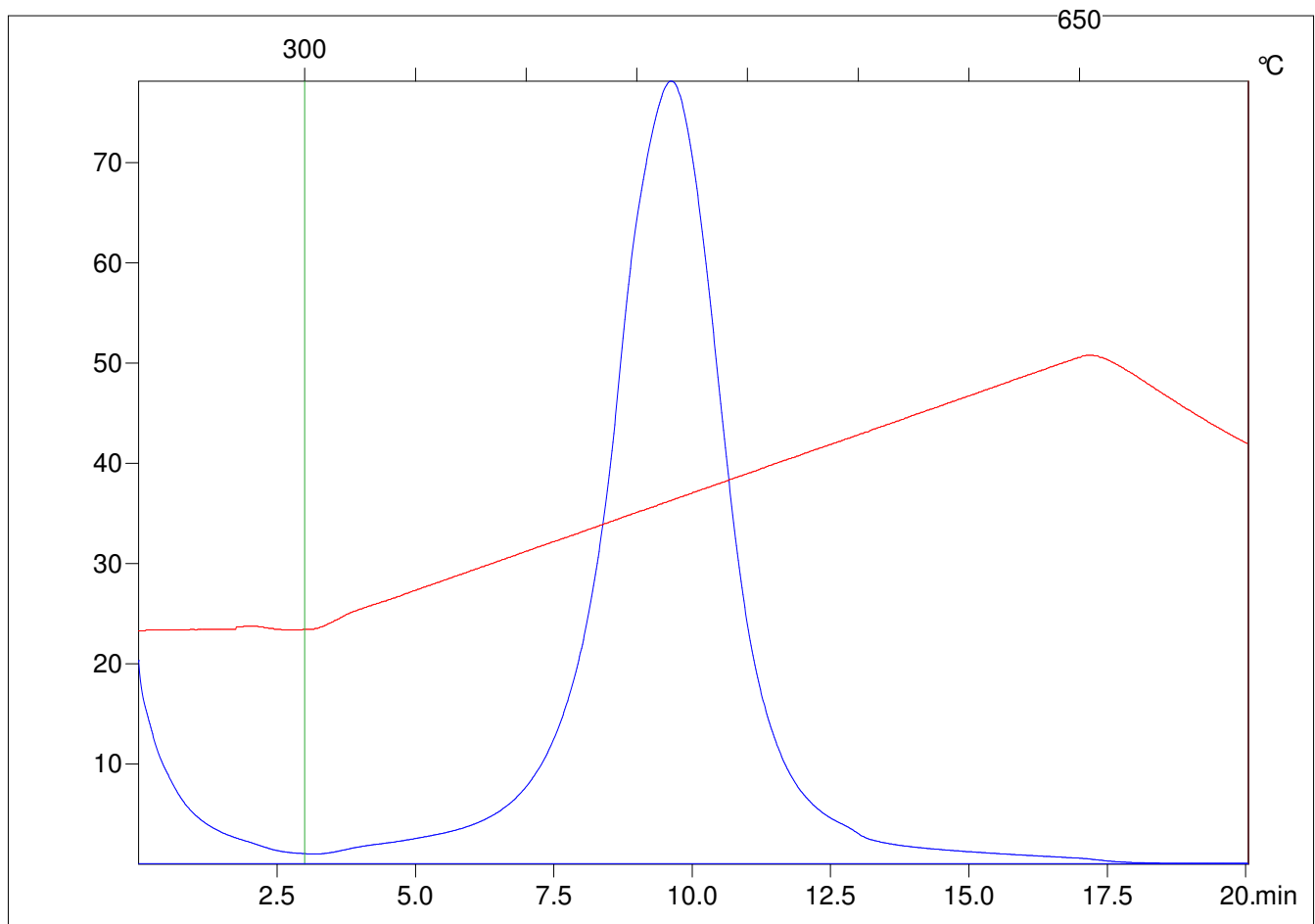
Method =Bulk Rock

Cycle=Basic

KFID(10*9)=1550

Qty =20.3

TOC=16.81



C:\VINC\PK130315\PK061.R00 : FID pyrolysis graphic

State

Pyro Status

Oxi Status